

# Information

## Notice about Rest Area

The following facilities are open as rest areas from 10:00.  
Please feel free to use it.

UNION SQUARE Cafeteria 1F  
CO-LEARNING HOUSE | 108&109

## Smoking & Drinking

Smoking is prohibited at Ritsumeikan University except in some areas.  
Please use the Designated smoking area when smoking. Drinking, selling, or bringing in alcoholic beverages (including non-alcoholic beverages) is prohibited at the school festival.

## Lost & Found

If you have lost or found an item on the day of the festival,  
please come to the festival headquarters.

## contact us

If you have any problems, please do not hesitate to contact the festival staff.

You may also contact the festival headquarters directly.

Festival Headquarters:077:551-5001



Here is the visitors' survey.  
We will accept it until Sunday, December 8.  
There will be a paper survey at the corporate booth &  
Festival Headquarters & Seal Rally Reception



University Festival Official X & University Festival Special Web Site.  
You can find the latest information on University festival official X  
and University festival special web.

Publishers : University-wide Events Department



# BKC FESTIVAL in 2024



## Table of Contents

02 BKC Campus Map	14 Fireworks Project
04 BKC Festival Overall Timetable	15 Fireworks Photo Contest Project
05 About BKC's 30th Anniversary&Congestion Map	16 Group Projects
06 Rits-Brothers Project	20 Rally & Game Project
08 Central Stage project	22 Food booth & Flea Market Project
10 Being Stage Project	25 Original Food booth Project
12 Pro Talent Project	26 Community & Corporate Sponsorship
13 Ending Project	

# Campas map


**Fountain Production**  
 An installation using projection mapping and interaction technology will be installed on the fountain to create a dynamic space for the school festival. This projection is partially funded by the "Grassroots Practice Support Program for the Promotion of R2023". We welcome participants of the activity.  
 Group name: Architectural Information Club, Location: Central Circus and Fountain, Grant representative: Satoshi Yamada, Implementing body: Architectural Information Club + Architectural Information Laboratory



-  Temporary Dustbin
-  Temporary Water Supply
-  Central Stage
-  Being Stage
-  Santa's House
-  Facilities for group projects



# Time Table

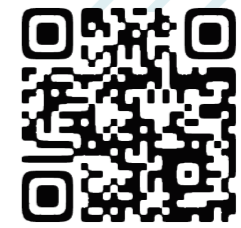
## The 30th year anniversary of BKC is this year!!

Established in April 1994 in Kusatsu City, Shiga Prefecture Biwako-Kusatsu Campus (BKC) celebrated its 30th anniversary this year.  
 Thank you for the understanding and support of many people.  
 In commemoration of the 30th anniversary, the finale was a fireworks display!  
 We hope you will enjoy it to the end.



## Festival congestion map

This festival map is a web application dedicated to the University Festival that provides detailed information on the planning site and booths of the festival, as well as the congestion status of the festival.  
 Please use this application to enjoy the festival more.



# Rits-Brothers Photo Event

Time: 11:00~17:00 Place: P105, Prism House 1F

Take a picture with the Rits-Brothers!

The first 900 visitors will receive an original sticker!

Make special memories with the Ritz Brothers with your original stickers!

Participation in the opening of the ending project  
Time: 17:40 Place: Central Stage

We will perform at the opening of the closing project of the University festival!

Let's get excited with the Rits-Brothers!

## Who are the Rits-Brothers?

Three penguin brothers. When they came to Japan from Antarctica on vacation, they were so fascinated by the Ritsumeikan University campus that they decided to stay in Japan and keep an eye on each campus.

Usually, they keep an eye on each campus one by one, but during the University Festival, the three brothers come together to liven up the festival.

### Kevin ( Eldest son)

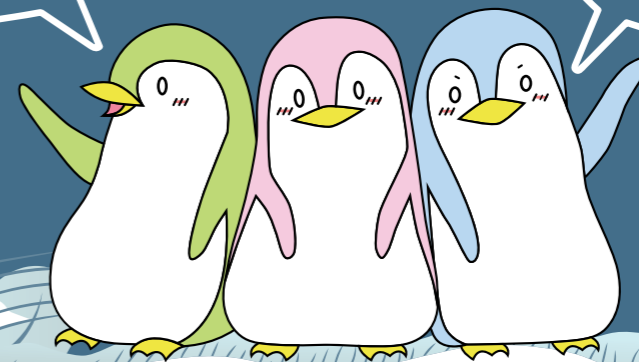
Kevin is multilingual, fluent in English, Japanese, Spanish, Chinese, and Korean. He enjoys reading books and often sits in the shade of a tree on the lawn, reading and keeping an eye on the students. Usually stays in Kinugasa.

### Oscar ( Youngest son)

He is passionate about morning activities. After waking up at sunrise and having a morning drink at the campus café, he goes to the music room to practice his jazz saxophone. He is usually at OIC.

### Billy ( Second Son)

A computer specialist, he manages all the systems on campus. He enjoys working out at the gym secretly after students leave. He is usually at BKC.



# Central Stage

Central Circus  
10:10~17:30

## Time Table

10:10	Opening Talk
10:15	Calligraphy Club
10:55	BeeMe(Song-genics)
11:20	Hawaiian Circle meahula
11:45	Original Project
12:30	Steppin'
14:00	Pro-Talent Project
15:30	G's(Jack & Beans)
15:55	Smickers(Jack & Beans)
16:20	Mrs.APPLE PUE(Rocket-Dan)
16:45	King Gun(BRISE MUSIC)
17:15	R.D.C.
17:50	Ending Project

### Performing Groups

#### Calligraphy Club



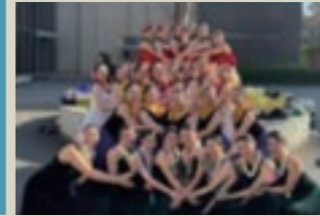
We would like to show the audience a new aspect of calligraphy, as well as enjoy the spectacular and energetic performance that is typical of a university festival.

#### BeeMe(Song-genics)



The majority of the members have participated in Hamonep (one of them is the best in Japan), and all the members have participated in a cappella national championships. We serve a cappella with the most sound quality that the five of us can produce.

#### Hawaiian Circle meahula



The most attractive thing about us at Mea Hula is that we all truly enjoy hula dancing. We will maximize our charm and show you a stage full of our individuality that only the BKC Festival can offer!

#### Steppin'



Our circle's main activity is K-pop dance copying. We have beginners, experienced dancers, and K-pop lovers, so anyone is welcome to join us.

#### G's (Jack & Beans)



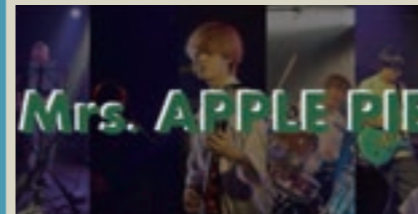
We are G's, a B'Z copy band belonging to Jack & Beans. We would like to make the stage of BKC Festival more exciting with many famous B'z songs that everyone knows, and we would like to make our performance memorable for everyone.

#### Smickers(Jack&Beans)



We had the pleasure of performing in front of the fountain during our lunch break this past June. This is the last year for the band as some of the members are graduating next March, and we will do our best to make it the best memory for us.

#### Mrs. APPLE PIE (Rocket-Dan)



We are the only official light music circle in OIC, and we are cared about "having fun with music". It is a circle where you can connect with many people through music!

#### King Gnu (BRISE MUSIC)



We are a copy band of the famous band King Gnu. We strive to completely reproduce the songs using the same guitar and megaphone microphone as King Gnu himself. We also made our own intro soundtrack.

#### R.D.C.



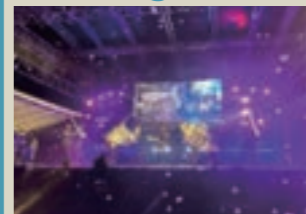
We are R.D.C., the only street dance circle in BKC. The group has six different genres, and we are proud of our ability to enjoy and enliven the stage without boring the audience with our powerful stage performances, each with different individuality as its strength.

### Original Project Performing Modern Jazz Ballet



The Modern Jazz Ballet is an official organization of the Arts and Sciences Association. We keep in mind that our club activities are cheerful and fun. We hope that our very friendly and close atmosphere is conveyed in our dances.

### Color guard circle LUSTER



Color guard is a performance using rifles and flags. It is very rare to find a circle that only performs color guard, so it can be a stage that can only be seen at this university festival. Please come and see it.

# Being Stage



**Being Square**  
10:30~17:25

## Time Table

**10:30 Opning (PEACE)**

**11:00 Hutekigou Shakai**

**11:30 Kaneko Ayano(BRISE MUSIC)**

**12:00 SHUMY**

**12:30 Chilli&Beans**

**13:05 R.D.C.**

**13:30 Fusion of Gambit**

**14:00 Hujii Masaki**

**14:35 Kusatsu Incidents**

**15:05 Brebleaders**

**15:35 Frede Rits**

**16:05 BKW**

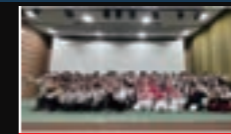
**16:35 Maple Culture**

**17:05 Ending(ReMember)**



We, Kaneko Ayano, are a band composed of BREISE MUSIC. BREISE MUSIC is a circle where people who love music can get together, play their favorite music, and share the joy of it. We believe we can show you the charm of the circle through this stage. This Kaneko Ayano's copy band has been playing live in the circle for about three years, although the members have been changing! We will bring you the most wonderful performance ever!

**Kaneko Ayano (BREISE MUSIC)**



We are R.D.C., the only street dance circle in BKC. We mainly perform street dance and every year, we have been planning the stage at the Welcome Festival, Open Campus, and BKC. We also participate in off-campus contests. We also participate in off-campus contests. In all, we have about 200 circle members. Our organization has six genres, each armed with different personalities and powerful stages, and we are proud of our ability to entertain the audience and make the BKC Mukyoku Festival stage more exciting. This year's stage will feature performances by 5 genres of first-year students, excluding those genres that will perform in the CS.

**R.D.C**



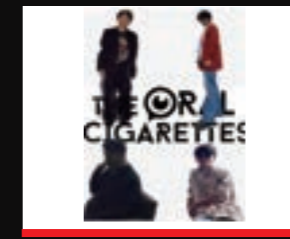
We are Chilli&Beans, a girls' band of the pop music circle Jack&Beans. We were formed last year as a copy band of Chilli Beans. Most of the members are newcomers to the band from college, but they have been actively involved in circle activities and practices, and have performed many times both inside and outside of the circle. We not only play instruments, but also put a lot of effort into chorus and performance. We deliver a cool performance that is as good as any other band in terms of both ability and beauty!

**Chilli&Beans.(Jack&Beans)**



We have regular activities twice a week and a regular concert once a month! We play acoustic guitar-based music, band, and instrumental music!

**Hujii Masaki (Acoustic Guitar Circle)**



We are here to make the best of the festival. We are here to sing, dance, and get excited with all of you. If you want to make your university festival memorable and exciting, come on out and join us! We will give it our all!

**BKW (Brise Music)**



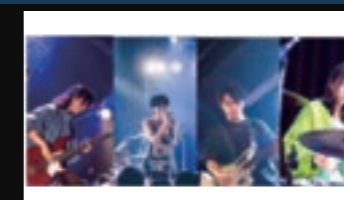
This band is a copy band of "Humbreaders" which has been active in the circle of Ritsumeikan BKC called Brise Music since a year ago. We have played many times at live houses in Shiga Prefecture, and have always been a hit with the audience. We have been playing with the same members for a long time, so we get along well with each other and are able to play in sync with each other! We formed the band one year ago when we saw people performing on the Central Stage and Being Stage at a school festival and wanted to be on that stage! We have been waiting for this year's festival for a year, practicing and improving our skills.

**Brebleaders(Brise Music)**



We are Kusatsu Incidents, a copy band of Tokyo Incidents! We are a close classmate band made up of only 2nd year students. We have a reputation for our performance skills, having performed on the Being Stage at last year's university festival and in this year's Welcome Stage project. We will make you ours with our perfect performance and performance.

**Kusatsu Incidents (Jack&Beans)**



We, the Rocket-Dan, are the only Authorized Organizations pop music circle in OIC. We have over 100 members, all of whom are unique, and our motto is to "have fun through music"! We regularly rent student halls and live houses for our live performances!

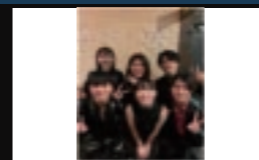
**Maple Culture(Roket-Dan)**



Nice to meet you all, we are Fusion of Gambit, a Double Dutch circle! Do you know what Double Dutch is? Double Dutch is a dynamic performance that anyone can enjoy, in which two ropes are jumped while dancing and doing acrobatics. We practice Double Dutch two days a week at BKG and OIC. Almost all of our members have no experience in dance or acrobatics and are all beginners who started playing Double Dutch as college students, so if you are at all interested, please come and watch us.

Achievements  
Advancement to the Losers' bracket of Double Dutch Depop Japan in 2023  
Winner of Double Dutch Depop Japan in 2021  
NDDL champion (1st in the world), etc...

**Fusion of Gambit**



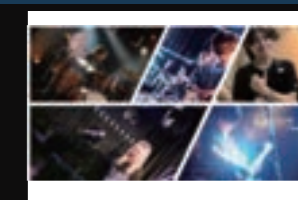
We belong to a cappella circle "Song-genics". We are ReMember, a sophomore band! We have performed in the Fuji Television National Hamonepu League, a competition mainly for professionals and those who are active on the Internet, this March. As a freshman, we won the top prize among all new bands in Japan! The band has been widely recognized for its abilities, including being selected as the grand prix winner at an event held in Shibuya this past September where acapellas from all over the country gathered. We usually sing mainly Western music, but we also have a repertoire of Japanese music.

**ReMember (A cappella circle song-genics)**



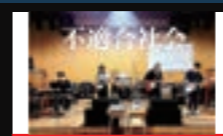
Free Music Circle PEACE is a music circle centered on Ritsumeikan University BKC with students from other campuses. Instead of playing songs in a band with fixed members, people who want to play around a song can get together and perform it, so we can play songs of all genres and on a variety of instruments. We hold regular concerts, joint concerts with other circles, and events inside and outside the circle for the purpose of performance and interaction.

**Free Music Circle PEACE**



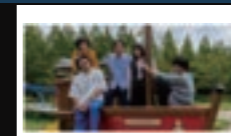
Hello everyone  
I'm Frede Rits from OIC and I'll be covering Frederick!  
Today we are going to play a very exciting song that is perfect for the university festival, so please enjoy it!

**Frede Rits (Roket-Dan)**



We are a copy band of "Green & Yellow Society" formed last year by the pop music circle Jack & Beans. We have been performing various live shows with the goal of performing on stage at the university festival. From the theme song of the famous anime to the song that pushes students' backs! The diversity of music genres makes the stage more exciting!

**Hutekigou Shakai(Jack&Beans)**



We, the Rocket-Dan, are the only Authorized Organizations pop music circle in OIC. We have over 100 members and our motto is to have fun through music. We regularly hold live concerts once a month at student halls and live houses. We also hold a camp during summer and winter vacations.

**SHUMY(Roket-Dan)**

# FUNKY MONKEY BABYS

BKC Festival Pro-Talent Project

Free Admission



FUNKY MONKEY BABY'S, famous for their cheering songs such as "Atohitotsu" and "Chippokenayuki", will appear at the Ritsumeikan University School Festival!

### Time

14:00~15:00

### Place

Central Stage

### Details

Check out the official University Festival website, X, and Instagram.

# Ending Stage

~ THE POWER OF TEAMWORK ~

Let's make the school festival last with a powerful stage!!

## Central Stage

17:40 ~ 19:25

### Performing Groups

#### Jack&Beans 17:50~

Ritsumeikan University BKC is a Voluntary Organizations pop music circle. We perform once a month and create a live performance from scratch, taking care of everything from PA, lighting, stage setup, and publicity. We have a wide range of friends and colleagues, both beginners and experienced musicians. We are enjoying our activities with a wide range of connections!



#### Kyototeam「sarara」18:20~

We are a 3-campus joint yosakoi circle, Kyototeam "sarara". We have about 130 members and get along well with each other regardless of gender or class. In August, we travel to Kochi and Tokyo, the home of yosakoi, to participate in festivals. This year's performance is called "Ten," in which the anger and



#### Maistyle: 18:50

We are Maistyle and we perform at Kinugasa campus! We are active in 7 genres: hiphop, break, lock, house, pop, style, and waack! We are working hard and competing with each other, both beginners and experienced dancers, and practicing every day! We will make today's showcase the best ever! Please enjoy the showcase!



Diving, moshing, and other dangerous activities are prohibited. Upon discovery, this event may be suspended without prior notice.

# Fireworks

This project will be the last of the 3-campus festival.

You may be able to see fireworks at the ending stage from 5:50pm!

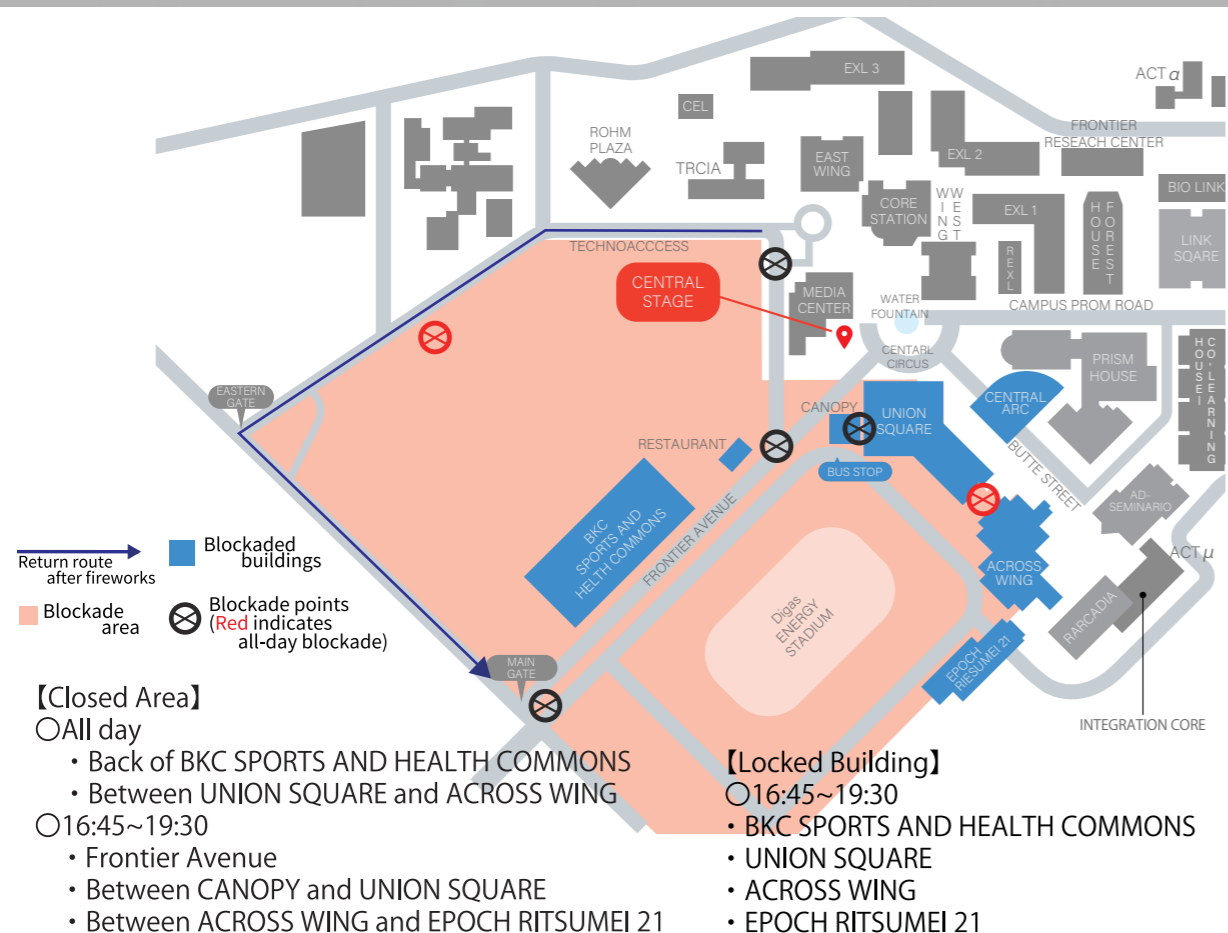
From 19:10 to 19:20, fireworks will be displayed in collaboration with music.

This year's event is a special version celebrating the 30th anniversary of BKC!

Please come and enjoy the fireworks shining in the winter night sky in front of the Central Stage where you can enjoy with music.

## ◀ Apology and Request for Fireworks Project ▶

The following building and pathway will be closed due to the fireworks project. Please follow the arrows below to exit from the East Gate during the blocked-off hours. If you take a bus between 17:15 and 19:30, please go through the East Gate and get off at the bus stop in front of the Main Gate of Ritsumeikan University. Please note that it will take about 10 minutes to get to the Ritsumeikan University Main Gate Stop via the East Gate from the Central Stage area. We apologize for the inconvenience and ask for your understanding and cooperation.



# Fireworks Photo Contest

Take pictures of **Fireworks** and enter them in our photo contest! We are looking forward to seeing your **unique** works.

## Application Period

December 1 (Sun.) 17:50~

December 6 (Fri.) 23:59

## ◀ Selection Method ▶

1st stage

- Identity of Ritsumeikan
- Identity of BKC Festival
- Beauty of fireworks

Based on these criteria, 20 works will be selected by the staff in charge.

2nd Stage

Winning entries will be selected from those that pass the first round of voting by the general public.

**[Voting period]**

December 9 (Monday) - December 13 (Friday)

Let's post the photos entered in the Contest on SNS as well!

#BKC Fireworks Photo Contest  
#Ritsumeikan University School Festival BKC Festival  
#Ritsumeikan University Festival

## ◀ Prizes ▶

**Grand Prize (1st Prize)**  
Catalog gift travel voucher  
(worth approximately 30,000 yen)

**Excellence Award (2nd place)**  
Amazon gift certificate  
(worth 5,000 yen)

**Honorable Mention Award (3rd to 5th place)**  
Amazon gift certificate  
(worth 3,000 yen)

To apply, please use this QR→





## OUTSIDE



- 1 Street Live in Rits Fes. 10:00~16:00  
Ritsumeikan Univ. a capella circle Song-genics
- 2 Rokat Live 12:30~16:00  
Rocket-Dan
- 3 PEACE Rits Fes. Street Live 13:00~16:45  
Free Music Circle PEACE
- 4 Get to know the Student Formula! 10:00~16:45  
Internal-Combustion Engine Society
- 5 Ritsumeikan Band Club Rits Fes. Live 12:00~16:45  
Ritsumeikan Band Club
- 6 Street Live 10:00~16:45  
Acoustic Guitar Circle
- 7 BRISE MUSIC Rits Fes. Street Live 10:00~16:45  
BRISE MUSIC

## BKC SPORTS AND HEALTH COMMONS

Relax Commons  
Tea Ceremony in Rits Fes.  
12:00 ~ 15:00 (14:30 Reception closed)  
Japanese Tea Ceremony Club

## BKC GYMNASIUM

BKC Gymnasium Arena 2  
RITS SPIRAL BKC WINTER 10:00~16:20  
Rits Techno Club

## EPOCH RITSUMEI 21

Epoch Hall  
Fiz BKC Fes. Performance 14:00~14:45  
Brass Band Circle Fiz (13:30 Open)

## UNION SQUARE

Union Hall Regular Concert at Rits Fes.  
Jack&Beans 12:00~16:30  
Union Food Court The House of Magic  
Magic Players 10:00~16:15

## RITSUMEIKAN UNIVERSITY ROHM PLAZA

ROHM PLAZA  
INTER PLAY Rits Fes. Concert 10:00~16:45

## COLEARNING HOUSE II

- C503,C504 *Let's move the robot!* 10 : 00 ~ 16 : 20  
Robot Technology Study Group
- C506 *Speaker Competitions* 10 : 00 ~ 16 : 45  
Acoustic Engineering Study Group
- C507 *Poster Presentation at Society of Pharmaceutical Sciences*  
Society of Pharmaceutical Sciences 10 : 00 ~ 16 : 00
- C508 *Planetarium* 10 : 00 ~ 16 : 00  
Kusatsu Astronomy Club
- C510 *Rits Smash Bros.* 10 : 00 ~ 16 : 00  
RitsumeikanSSBcircle
- C601 *Rits Fes. Illustration Exhibition* 11 : 00 ~ 16 : 00  
Lake Biwa Manga Study Group
- C602 *We should start reducing food loss at our place soon!*  
Expo Student Committee "Ookini" Food Unit
- C603 *Sustainable Dining Exhibition* 10 : 00 ~ 16 : 45 10 : 00 ~ 16 : 45  
Expo Student Committee "Ookini" Food Unit
- C607 *Go to the Rits! by Tekken* 10 : 00 ~ 16 : 45  
Railway Club

## PRISM HOUSE

- P106 *Only Electone Games: With good music! Refreshing!*  
12 : 00 ~ 16 : 30 Electone Circle SANDAN KENBAN
- P107, P108 *Calligraphy Club Autumn Exhibition* 10 : 00 ~ 16 : 45  
Calligraphy Club
- P111 *Atra group projects* 11 : 00 ~ 16 : 00  
Atra
- P114 *We keep climbing, this physical hill.2024* 11 : 00 ~ 15 : 00  
Society of Physical Sciences
- Prism House Piloti* BKC JAZZ STAGE 12 : 30 ~ 16 : 00  
JAZZ CLUB

## RARCADIA

- R201 *Art Club December Exhibition* 10 : 00 ~ 16 : 00  
Art Club
- R301 *Ritsumei Biwaentertainment hall* 12 : 40 ~ 16 : 00  
Rakugo Society
- R302,R303,R304,R310,R311 *Strange Tree World* 11 : 00 ~ 16 : 45  
REM
- R306 *Flower Arrangement Exhibition* 10 : 00 ~ 16 : 00  
Kado & flower arrangement circle
- R309 *Experience the movements of an AI-operated robot!*  
Ri-one 11 : 00 ~ 16 : 00
- R402,R403,R410,R411 *Rits Fes. Exhibition* 10 : 00 ~ 16 : 00  
Ritsumeikan University Photo Club
- R405 *Homebrew Game Trial Play Session* 11 : 00 ~ 16 : 10  
BEAT SENSE
- R406,R407,R414 *TRPG Trial Session* 10 : 00 ~ 16 : 45  
TRPG Club
- R409 *IVUSA Exhibition* 10 : 00 ~ 16 : 45  
IVUSA KYOTO



# Rally & Game Project

**10:00~16:45**

In Rally & Game Project, you can collect up to 15 stickers by participating in group events in three different areas! Get original university festival goods according to the stickers you collect!

What a surprise this year! The chance of winning is more than 5 times higher than last year! This year's prize is more than five times more than last year's!

## University Festival Original

- 1st prize: Flat pouch (navy)
- 2nd prize: Cotton drawstring bag (beige)
- 3rd prize: Original sticker & Mild liner



A game project to find Billy by playing a shooting game and solving the crossword! Raffle drawings will be determined according to the degree of participation! Win gorgeous prizes!

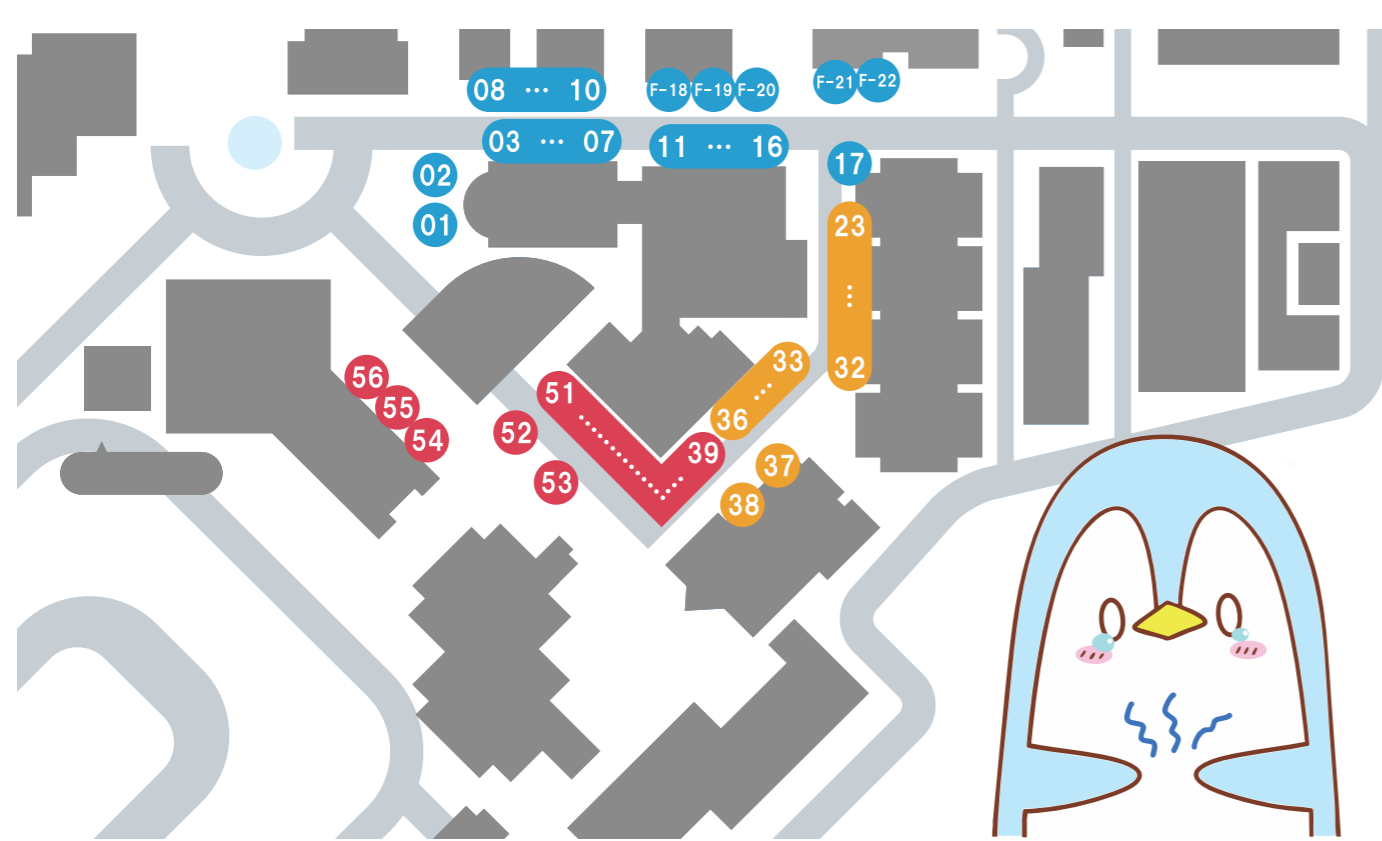


### Mission

- Look around the group events divided into three areas!
- Defeat three or more targets in target shooting!
- Complete the crossword within 5 minutes to escape!
- Get the code to the "secret room" and win a present. Teamwork is the key! Trust your friends!

### Raffle Prizes





## List of Food Booths

<b>1</b> <i>Yakitori Human</i> # Japanese Stly Skewer Of Chicken Thigh	<b>2</b> <i>Corn Courage</i> # Corn Soup With Rice Cake	<b>13</b> <i>A.N.E.D. Frankfurter</i> # Frankfurter	<b>14</b> <i>Potekarakun</i> # French Fries, Fried Chicken
<b>3</b> <i>Simandine Takata</i> # Coffee And Pancakes	<b>4</b> <i>Cloud Boiled Dumplings</i> # Boiled Dumplings	<b>15</b> <i>Morishoku Returns</i> # Minestrone	<b>16</b> <i>Ritsumeikan Coffee Society</i> # Drip Hot Coffee
<b>5</b> <i>Voots' Tamasen</i> # Tamasen	<b>6</b> <i>Tonshinka</i> # Iekei Pork Miso Soup	<b>17</b> <i>TAPIOKABE</i> # Tapioca Tea	<b>23</b> <i>Hot And Spicy Meatballs</i> # Maalatan
<b>7</b> <i>Rits Blend coffee</i> # Coffee	<b>8</b> <i>FOR TWO 10,000 miles cooking</i> # Fried Bread, Chai Tea	<b>24</b> <i>Shodou</i> # Zenzai	<b>25</b> <i>Delicious soup shop in Jungbom</i> # minestrone
<b>9</b> <i>DAN•DAN Kokoro Hikareteku Dango</i> #Dango	<b>10</b> <i>Gyoza no Ousho</i> # Chainese Dumping	<b>26</b> <i>Dorayaki Manimani</i> # Oshiruko Dorayaki	<b>27</b> <i>Are You Okay? Do you want some pork miso soup?</i> # Pork Miso
<b>11</b> <i>Nikujiru Gyouza Soup</i> # Chainese Dumoing Soup	<b>12</b> <i>Solt Yakisoba</i> # Solt stit-Frie noodles	<b>28</b> <i>Crown Maison</i> # Korean pancakes	<b>29</b> <i>Fried Pork in Scoop</i> # Fried Pork in Scoop
		<b>30</b> <i>Gyoza Mamula</i> # Chainese Dumping	<b>31</b> <i>Burakasutera</i> # Japanese Sponge Cake
		<b>32</b> <i>Gyut Udon Noodles</i> # Udon noodle with	<b>33</b> <i>Mathematics Laboratory Churros</i> # Churros
		<b>34</b> <i>Soup Dumpling-Chan</i> # Soup Dumpling	<b>35</b> <i>Zenzai-Ya lamp</i> # Zenzai
		<b>36</b> <i>Soy Keema Curry</i> # Keema Curry	<b>37</b> <i>Cheddar</i> # Udon Noodle
		<b>38</b> <i>Natural</i> # Cheese Ball	<b>39</b> <i>Aneiro Gyoza</i> # Boiled Dumplings
		<b>40</b> <i>Aun</i> # hurricane Potato	<b>41</b> <i>Business trip! BNP</i> # poutine

**42** Pharmacy Boss Japanese Sponge Cake  
# Japanese Sponge Cake

**43** Jimenshis  
# Stit-Frie noodles

**44** Bono's Jagabataya  
# French Fries

**45** Honey Hunt for Vibrant Bees  
# Hot cocoa & honey tea

**46** Bebiluf  
# Japanese Sponge Cake

**47** The fried chicken that made all the chickens cry  
# Fried Chicken

**48** Run, Churros  
# Churros

**49** FLY de Potatoes  
# French Fries

**50** Ken-chan's Oden  
# Oden

**51** Franklyfurt  
# Frankfurt

**52** Fukushima-ya Ritsumei-Shop  
# Zenzai

**53** RRAC Restaurant  
~Yoshirin's Secret Taste~  
# Pork Miso Soup

**54** Why not just use dumplings already?  
# soup of dumplings and vegetables

**55** Taimaru  
# Anman, Nimman, Pizaman

**56** Buttonjiru  
# Pork Miso Soup

## Flea Market List

**18** Pu Pu Pu Pu the Rat vintage  
# Used clothing stores, used books, and other miscellaneous goods

**19** Shizema  
Clothes, etc. that you no longer wear

**20** SUB  
# Handmade Goods

**21** Rits used shop  
# Clothing, clothing

**22** Capa  
# Vintage Clothing, Miscellaneous Goods



Visit many Food booths and flea markets, and try to win gorgeous prizes by collecting bingos! And if you meet Santa Claus who appears on the premises, he might bring you good luck!

@11:00~17:15

### 【Rules】

You can get a stamp when you buy something at the booths and flea market. If you get one vertically, horizontally, or diagonally aligned, you can draw once. Bingo can be achieved up to 2 rows. If you have two rows of bingo stamps, you can draw twice. Only one stamp is allowed per store. If you find Santa in the middle, you will get a stamp and maybe even better... Bingo can be completed without using the middle Santa. Santa Claus will appear in the area around the booths and flea market. Please refer to the map on the previous page for the alphabet on the bingo cards. B→Blue area, Y→Yellow area, R→Red area. The color can also be confirmed by the color of the tent. The lottery will be held at the Original Project Voting Booth (Santa's House). Bingo cards will be collected at the time of the drawing.

### Prizes

- Echo Dot (with paper bag)
- Meat gift certificate
- Mobile battery
- Water bottle
- Reusable Tote Bag
- Face towel R mark
- T-shirt (R mark, white, black, maroon)
- Mug cup
- Postcard with glowing bracelet

# Corporate Booth Events

Location: BKC GYMNASIUM & First Ground

Time: 11:00~16:45

※ Please pick up a shoe bag at the entrance and put your shoes in it.

Japan Cosmetic  
Licensing Association  
(JCLA)

GLOBAL AGENTS CO., LTD

n.o.s. product

Please come visit us and see what kind  
of events we have in store for you!



## Stores around BKC

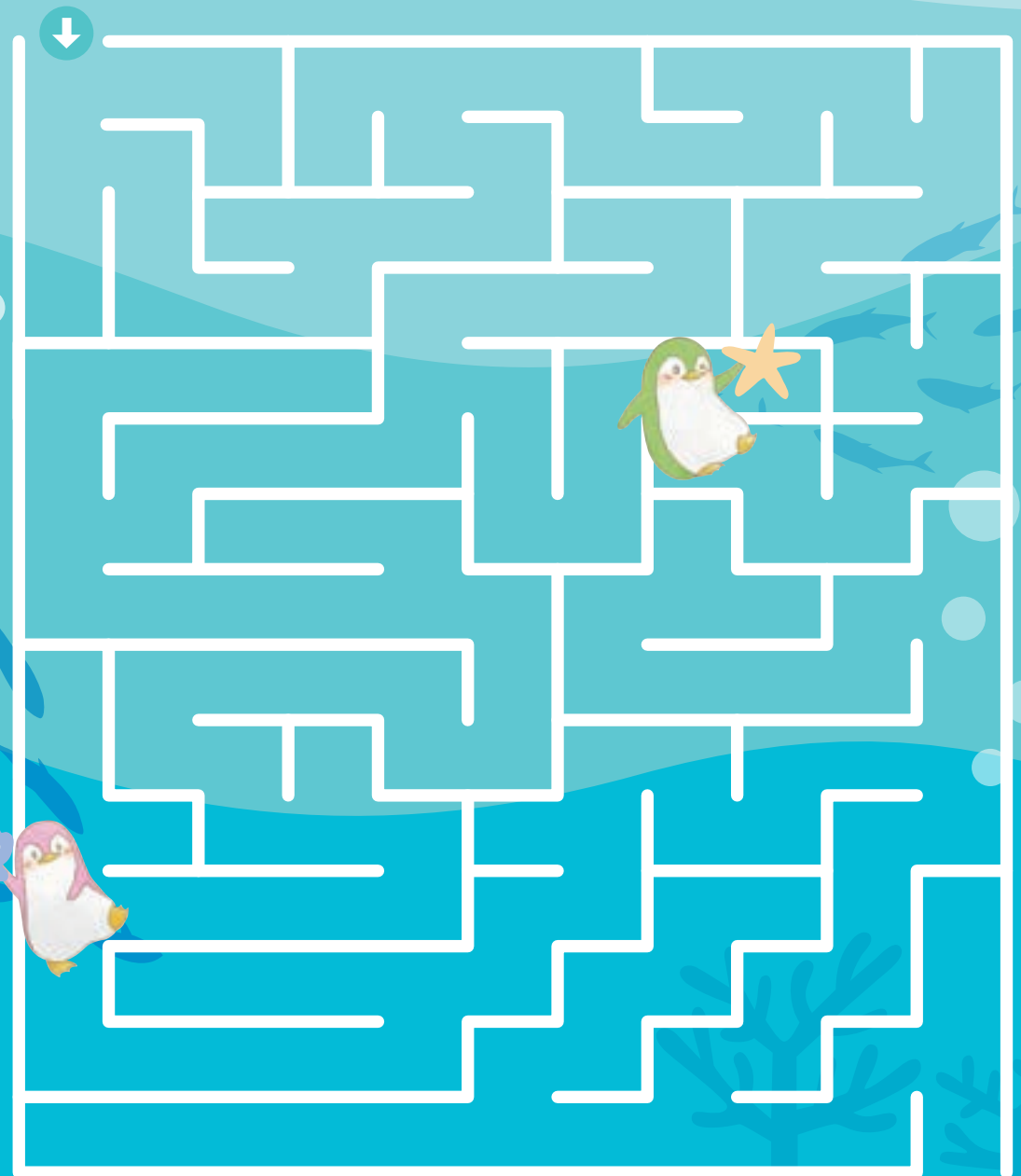
The stores around BKC are introduced in our comprehensive pamphlet (p. 85-91)!

It also has some great deals, so be sure to check it out!

Extra

Oscar and Kevin are coming to the BKC Festival!  
But they got lost on the way...  
Let's find Oscar and Kevin and take them to Billy's place!

Start



Have fun at the BKC Festival!

Goal !!

