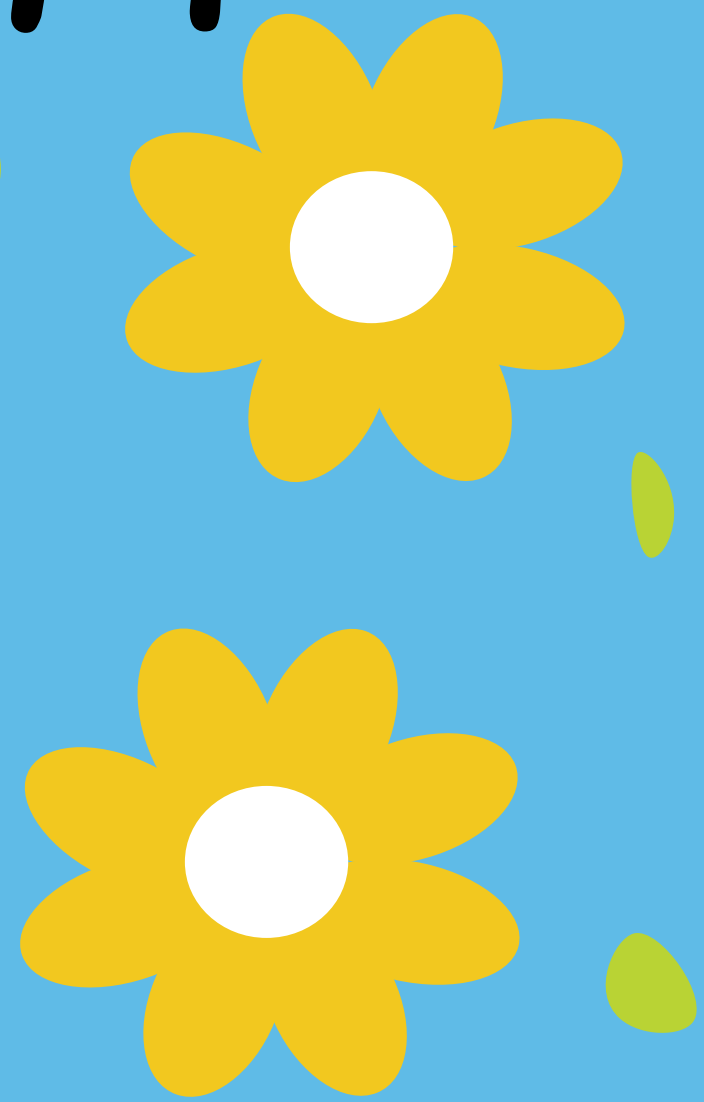
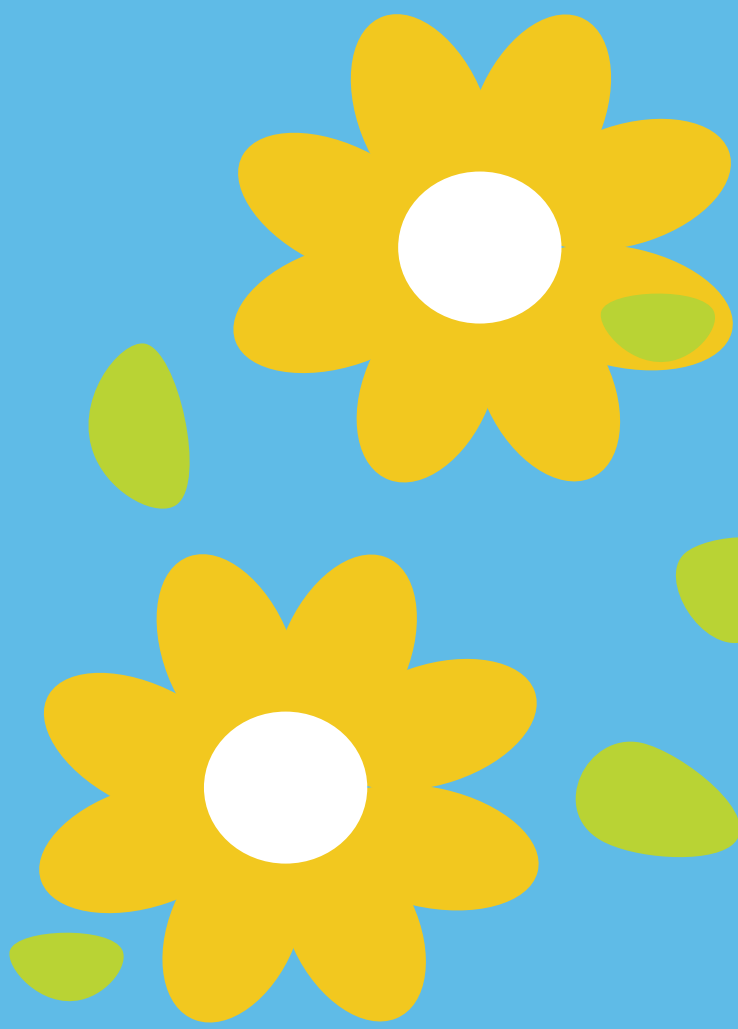


# Welcome Festival



4/3

4/4



## • What is welcome festival?

Welcome festival is an event that provides the opportunity for the new coming students and students in their 2nd year or above to know more about the content of activities in circles and organizations !

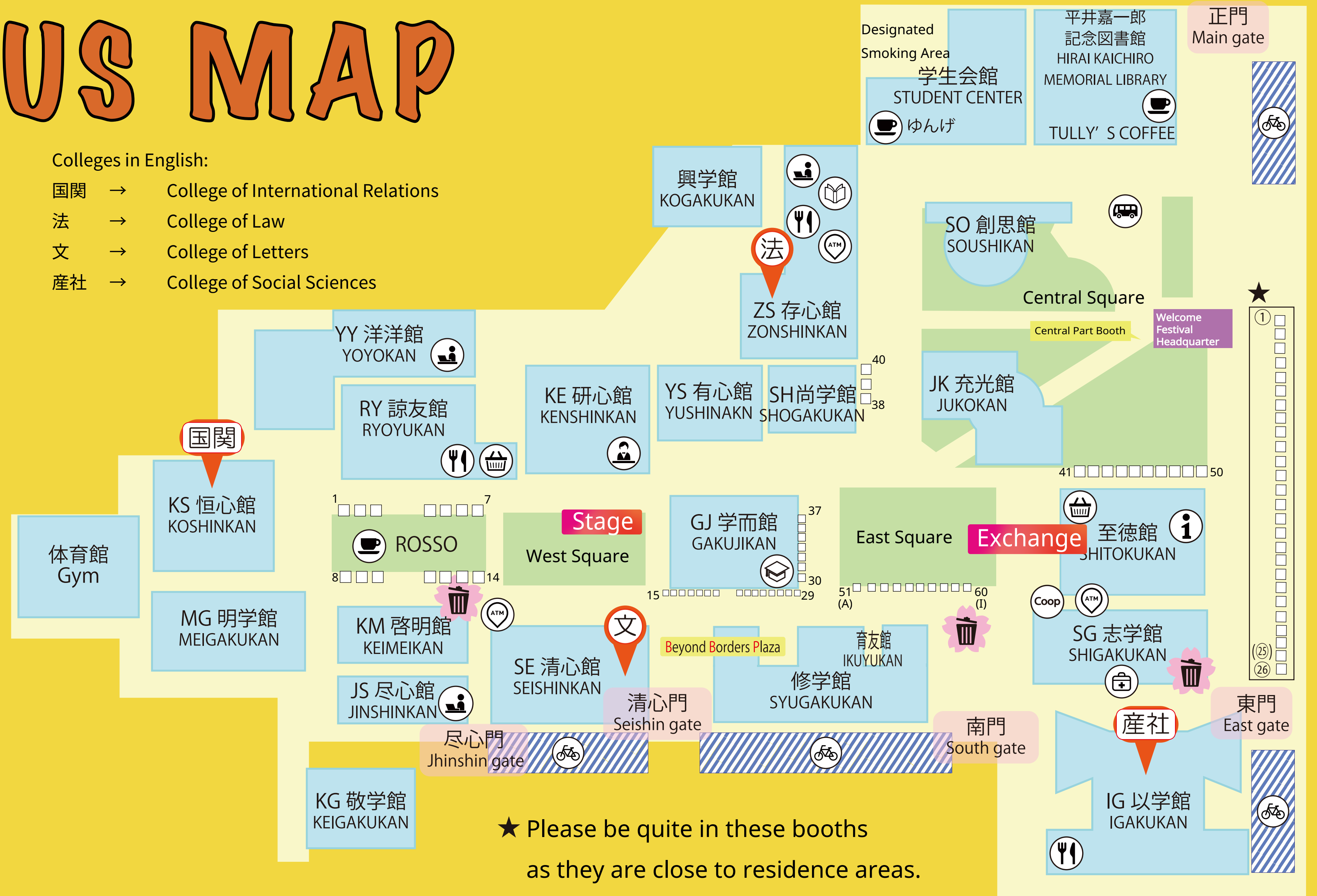
# CAMPUS MAP

- 学びステーション (Manabi Station)
- 学生オフィス (Student Affairs)
- バス停 (Bus Stop)
- キャンパスインフォメーション (Campus Information)
- 保健センター (Medical Service Center)
- 生協衣笠センター (Coop Center)
- 食堂 (Cafeteria)
- 購買 (Shop)
- カフェ (Cafe)
- ブックセンターふらっと (Book Store)
- ATM
- マルチメディアルーム (Multimedia Room)
- 駐輪場 (Parking Space)
- 雑紙専用回収ゴミ箱 (Paper Only Trash Can)

○ **How to deal with flyers**  
 3 Paper Only Trash Cans are set in the campus.  
 Please through the flyers away into these trash cans if you do not need them.

Colleges in English:

- 国関 → College of International Relations
- 法 → College of Law
- 文 → College of Letters
- 産社 → College of Social Sciences



★ Please be quite in these booths as they are close to residence areas.

※ For April 4th only, booth from A to I will play sound, meaning that the quite booths (★) will be ① to ⑳

# Circle Booth Events

11:30 a.m.

~ 5:00 p.m.

In these events, all the participating organizations set the booth at designated location and perform introduction about themselves

※ The close time differs

## April 3rd

between booths

<Normal Booths>

(No.45, mauloa opens from 2:00 p.m.)

| Booth No. | Organization Name                              | Contents  |
|-----------|--|---|
| 1         | New Music Kenkyuukai                           | Copy HR and HM  |
| 2         | Ritsumeikan EVOLVED                            | The community of music game players                                 |
| 3         | Ritsumeikan Archery Club                       | Doing archery at Hiragino Multipurpose Ground (KIC)                 |
| 4         | Japan Model United Nations Kyoto Branch        | Be an ambassador and take part in a simulated UN conference         |
| 5         | Archaeological Society                         | Research ruins in Kyoto and touring ruins in the Kinki region       |
| 6         | Walkers  | Softball  |
| 7         | Kinugasa Garden Kreis                          | Students and local people work together on farm work                |
| 8         | RU Expo Student Committee SusTable             | Workshops and food exhibits aiming exhibition at the Expo           |
| 9         | Ballroom Dance Club                            | Improve ballroom dance skills and participate in competitions       |
| 10        | Rits_lovelive                                  | Research and watch Love Live!                                       |
| 11        | Atra   | Production and exhibition of original novel games, etc.             |
| 12        | Kyudo club (Japanese archery)                  | Aim national victory by comprehensive excellence and humanity       |
| 13        | Houroudoukoukai                                | Traveling around Japan and interacting with people                  |
| 14        | Ritsumeikan University Soccer Club             | Work hard every day to achieve our goal of national domination      |
| 15        | Aikido Club                                    | Train the mind and body through Aikido                              |
| 16        | Society of Social Sciences Club                | Research activities regarding social sciences and humanities        |
| 17        | Modern Jazz Ballet                             | Mordern ballet, Jazz dance, and traditional Chinese dance           |
| 18        | Photography Study Group                        | Photography group mainly about film cameras                         |
| 19        | Ritsumeikan Univ. Press                        | Interviewing, writing, checking, and publishing the newspaper       |
| 20        | Ritsumeikan Athlete Circle (RAC)               | Improving athletic ability and promoting athletics                  |
| 21        | RWF Ritsumeikan Pro Wrestling Club             | Student Pro Wrestling   |
| 22        | Tenmonkenkyukai                                | Events at child centers, planetarium lecture at university festival |
| 23        | Dig up treasure                                | Double dutch  |
| 24        | Ancient History Exploration Department         | Sightseeing in Kyoto city   |
| 25        | Ritsumeikan Yu-Gi-Oh Circle                    | Experiencing and communicating with Yu-Gi-Oh game                   |
| 26        | BBS in Kinugasa Area                           | Free school and volunteers in children's cafe                       |
| 27        | Ritsumeikan University Yacht Club              | Practic yacht and compete in Late Biwa                              |
| 28        | RU Student Union Central Administrative Office | Manage Student Union fee and affiliated organizations               |
| 29        | Windsurfing Team                               | Practice windsurfing in Late Biwa                                   |
| 30        | Ritsumeikan University Sports Chanbara Circle  | Sports sword fighting using airsoft swords                          |
| 31        | Ritsumeikan University Automobile Club         | Attend motor sports competitions                                    |
| 32        | Scuba Diving Circle NGIS                       | Scuba diving  |
| 33        | Figure Skating Club                            | Practice on ice and attend competitions                             |
| 34        | Men's softball                                 | Softball  |
| 35        | The society of Piano                           | Communicate with paino backgrounds                                  |
| 36        | Rifle Shooting Club                            | Shooting the targets  |
| 37        | Karate club (new)                              | Karate competitions such as kumite and kata                         |
| 38        | Battens  | Basketball ciecle   |
| 39        | IVUSA KYOTO                                    | Volunteer activities in a variety of fields                         |
| 40        | Electone Circle SANDAN KENBAN                  | Spreading the appeal of the Electone                                |
| 41        | Kyudo Circle                                   | Practice to improve your archery skills, play club matches, etc.    |
| 42        | Athletic Association American Football Club    | American Football   |
| 43        | Triathlon Club                                 | Practice swimming, cycling, and running and combined exercise       |
| 44        | Woman's Basketball Team                        | Basketball activities and development                               |
| 45        | Mauloa   | Hula dance  |
| 46        | Rits BLOH                                      | Volunteer activities domestic and international                     |
| 47        | Pottery Club                                   | Make pottery in the club room and community service                 |
| 48        | Nippon-Kempo                                   | Practice for 4 weeks before competition                             |
| 49        | ACE  | Volleyball  |
| 50        | Kyoen Sodefure! Odorits                        | Yosakoi dance performances centered around Kansai region            |
| 51        | RISE   | Activities to deepen friendships through table tennis               |
| 52        | Political Research Society                     | Researches in the field of politics and social problems             |
| 53        | Study Group of Legal Philosohey                | Read and discuss about Legal Philosophy and political articles      |
| 54        | Traditional Art Research Club                  | Appreciate and research traditional arts and culture                |
| 55        | RitsCat  | Rescue and awareness raising for abandoned cats                     |
| 56        | Folk song club KEAKS                           | Band circle performing live activities                              |
| 57        | Ritsumeikan University Grass Roots             | Rugby   |
| 58        | Ritsumeikan University Orienteeing Club        | Do orienteeing  |
| 59        | Touhou eimeikyou                               | Play the game Toho Project  |
| 60        | TRPG club                                      | Play TRPG   |

## <Quite Booths>

Please be quite at these booths as they are close to residence areas.

| Booth No. | Organization Name                        | Contents   |
|-----------|--|--|
| ①         | FC Haratani                              | Practice and attend competitions of soccer and futsal                |
| ②         | Soft tennis Club                         | Practice and attend competitions of soft tennis                      |
| ③         | Wonder Vogel Club                        | Mountain climbing  |
| ④         | Hana Musubi                              | Operating flower beds in campuses                                    |
| ⑤         | Cycling Organization                     | Go to various destinations by bicycle                                |
| ⑥         | FC.ALEGRE                                | Soccer   |
| ⑦         | Ritsumeikan University Photo Club        | Regular photoshoots exploring free expression , MTG once per week    |
| ⑧         | Iaido Club                               | A martial arts club using Japanese swords (replica swords)           |
| ⑨         | Ikenobo Ikebana Club                     | Ikenobo Flower Arrangements  |
| ⑩         | Cinema Club                              | Making independent films   |
| ⑪         | Ritsumeikan Univ. Camera Circle Yurucame | Monthly photo shoot and interaction between members                  |
| ⑫         | Entrance exam staff group                | Entrance exam event activities                                       |
| ⑬         | Badminton Club                           | Badminton activities 5-6 times a month (Shimadzu Arena)              |
| ⑭         | Tea Ceremony Urasenke Kannazuki          | Daily lessons and holding tea ceremonies at university festivals     |
| ⑮         | International Cooperation "IROHA"        | Supporting education for Cambodian children                          |
| ⑯         | Mystery Novels Circle                    | Reading group and make ranking of mystery novels by publishers       |
| ⑰         | Sign Language Circle AYUMUKAI            | Learn sign language  |
| ⑱         | Ritsumeikan Univ. Cycling Club (RCC)     | Cycling  |
| ⑲         | JAZZ CLUB                                | Live performances and practice sessions both in and outside of univ. |
| ⑳         | Legal Negotiation Study Group            | Study commercial arbitration and business negotiations               |
| ㉑         | Kyoto Intercollegiate Festa              | Preparation for the festival and operation on the day                |
| ㉒         | Gekidanritsumeigeijutsugekijou           | Four regular performances each year and additional performances      |
| ㉓         | Ritsumeikan Univ. Quiz Society           | Participating in quiz competitions                                   |
| ㉔         | Manga Club                               | Members interactions and production of illustrations and others      |
| ㉕         | Railway Club                             | Research activities on public transport                              |
| ㉖         | Ritsumeikan Univ. Symphony Orchestra     | Student Orchestra  |

## April 4th

## <Normal Booths>

| Booth No. | Organization Name                                | Contents  |
|-----------|--|---|
| ①         | Athlete Volunteer Association (AVA)              | Volunteer and advertisement about university sports                     |
| ②         | Kyototeam 「sarara」                               | Yosakoi dance, originated in Kochi Prefecture                           |
| ③         | Rakugo Society                                   | Performances of Rakugo, Manzai, and comedy sketches                     |
| ④         | Kinuton  | Badminton   |
| ⑤         | SILKY COTTON                                     | Tennis activities through twice-weekly activities and camps             |
| ⑥         | Men's Lacrosse                                   | Playing lacrosse to seek results and personal growth                    |
| ⑦         | Ritsumeikan Castle Research CLUB                 | Research and fieldwork on castles                                       |
| ⑧         | natuRable  | Volunteer working on environmental conservation activities              |
| ⑨         | Advertisement Research Society                   | Free paper and advertising competition production                       |
| ⑩         | Kinugasa Student Coordinator                     | Activities to promote student volunteerism                              |
| ⑪         | Democratic Youth League                          | Social science research and fieldwork                                   |
| ⑫         | Innocence Project Japan (IPJ) Student Volunteers | Volunteer to help victims of false accusations                          |
| ⑬         | Japanese Music Club                              | Hold concerts using Japanese musical instruments                        |
| ⑭         | Maistyle   | Street dance circle   |
| ⑮         | MILLENNIUM                                       | Badminton and monthly event   |
| ⑯         | Hyakuyen Writer                                  | Various creative activities such as novels, poetry, illustrations, etc. |
| ⑰         | Goshu Rits                                       | Visit temples and shrines around Japan and collect stamps               |
| ⑱         | Volleyball circle WINS                           | Volleyball  |
| ⑲         | The Historical Research Society                  | Historical research, information exchange and communication             |
| ㉑         | Ancient Japanese Martial Arts Club               | Mastering the art of kobudo through practice                            |
| ㉒         | Gymnastics Club                                  | Gymnastics practice and competition participation                       |
| ㉓         | ROBINHOOD  | Volunteer works and camps with children                                 |
| ㉔         | STUDY FOR TWO                                    | Win-win international education support through textbook sales          |
| ㉕         | The Student Legal Consulting Club                | Free legal consultations for Kyoto citizens                             |
| ㉖         | Puppet Theater Fusen-nori                        | Volunteer performances e.g. puppet show and picture-story show          |

**<Music Booth>** Recruitment activities using songs or music will be performed between 11:30 a.m. ~ 1:30 p.m. Normal recruitment activities will be performed during other time.

| Numbering | Organization Name                            | Contents   |
|-----------|--|--|
| A         | Medics Choir                                 | Choir practice and concerts, mainly for mixed choirs     |
| B         | Brass Band Circle Fiz                        | Perform with wind instrument                             |
| C         | Gitaemon                                     | Mainly perform acoustic guitar music                     |
| D         | Mandolin Club                                | Mandolin Club  |
| E         | Classical guitar club                        | Perform with classic guitar                              |
| F         | Rits Techno Club                             | Perform music such as DJ and DTM                         |
| G         | Ritsumeikan Univ. Cheering Club Cheerleaders | Sports and athletics support and invited activities      |
| H         | A cappella circle Clef                       | Perform cappella events in and out of the university     |
| I         | Gagakukai                                    | Introduce and play the instruments used by organizations |

## <Normal Booth>

| Booth No. | Organization Name                                      | Contents   |
|-----------|--|--|
| 1         | Ritsumeikan Ogasawara-ryusen Tea Ceremony Circle       | Lessons and Tea Ceremony organized by Ogasawaryusen                  |
| 2         | Korean workshop  | Learn and eliminate discriminations against Koreans in Japan         |
| 3         | Aviation Club  | Sky sports using glider  |
| 4         | Fire And Safety Team (FAST)                            | Disaster prevention event staff and disaster rescue volunteers       |
| 5         | Speed Skating  | Short track  |
| 6         | Good Samaritan Club                                    | Foreign visitors guide   |
| 7         | Ritsumeikan Tanka Club                                 | Create Tanka, song ceremony, and sell works                          |
| 8         | Magic Players  | Learn magics and community exchange                                  |
| 9         | Ritsumeikan Sentou Circle                              | Volunteers to help clean Sentou                                      |
| 10        | Ritsumeikan Univ. Broadcasting Center (RBC)            | Radio broadcasting and help operate the stage in university festival |
| 11        | Shorinji Kempo Club                                    | Activities such as Shorinji Kempo Tournament                         |
| 12        | Handicraft Club Rowan                                  | Make things you would like to once or twice every week               |
| 13        | Creative Dance Circle Collash                          | Dance that contains various kinds of genres                          |
| 14        | Kintaro Demo Ski Team                                  | Basic skiing   |
| 15        | Horse Racing Hihi-n                                    | Watching and making prediction paper of horse racing                 |
| 16        | Ritsumeikan Univ. Cheering Club Brass Band             | Concert, attending competitions, requests, and cheerings             |
| 17        | Nohgaku Club   | Self-performance twice a year and activities utilizing Nohgaku       |
| 18        | Explorers Club   | Mainly doing cave exploration, mountain climbing, and rafting        |
| 19        | Japanese Tea Ceremony Club                             | Practicing culture with Tea Ceremony                                 |
| 20        | Ritsumeikan Univ. Athletic Association Kendo Club      | Kendo classes  |
| 21        | PTP -Pokemon Trainers Party-                           | Club member communication based on Pokemon contents                  |
| 22        | ROOKIES  | Basketball games at gyms located in Kyoto city                       |
| 23        | Orang Earth  | Volunteered environment protection with Honjo Conservation Society   |
| 24        | Shogi Research Association                             | Shogi  |
| 25        | Ritsumeikan Univ. English Speaking Society (RESS)      | Communication using English  |
| 26        | Steppin'   | Covering KPOP dances   |
| 27        | Ritsumeikan Korean Language Circle                     | Learning Korean and communicating with South Koreans                 |
| 28        | Gekkousha Theater Team                                 | Performing stages that are entertaining                              |
| 29        | Ritsumeikan Univ. Central Administrative Office Saizy  | Operating university festival  |
| 30        | Ritsumeikan Band Club                                  | Playing and practising for concerts in and out of the university     |
| 31        | Wadaiko-don  | Show of traditional entertainments                                   |
| 32        | Geography Society                                      | Monthly inspections and annual research                              |
| 33        | Ritsumei Sports Press Agency                           | Newspaper production centered on reporting on Athletic Association   |
| 34        | Hawaiian Circle meahula                                | Hula dance   |
| 35        | Ritsumeikan Squash Club                                | Squash   |
| 36        | Ritsumei PEN Club                                      | Literature creation (writing, making booklets, and selling)          |
| 37        | Women's Soccer Club                                    | Soccer   |
| 38        | Potenhits  | Baseball training camps and league games                             |
| 39        | Media Art Society                                      | Creation (reporting, writing) and publication of journals            |
| 40        | Ritsumeikan Women's Lacrosse                           | Women's lacrosse   |
| 41        | Tutors for International Students Assembly             | Support international students and plan communication activities     |
| 42        | sfidante   | Practicing and attending competitions of soccer                      |
| 43        | Synthesized Expressing Circle "P.Name"                 | Diverse creative activities such as novels, songs, and plays         |
| 44        | Ritsumeikan Univ. Shrines and Temples Guide Volunteers | Volunteer guides for shrines and temples                             |
| 45        | cos-mate   | Sharing information about cosplay and holding photo sessions         |
| 46        | How to Wear a Kimono                                   | Wearing Kimono   |
| 47        | Houyukai of Ritsumeikan University                     | A law club that participate in legal debates, lectures, summer camps |
| 48        |  |  |
| 49        | Ritsumeikan Univ. Headquarters of Athletic Association | Introduce the organizations affiliated to Athletic Association       |
| 50        | LIBRE  | Supporting education in Laos through scholarships                    |

# New Information coming from official SNS accounts for Welcome Festival !!!



## Organization Events

“Organization Events” will be held by various organizations during April 5 to April 30! Please read the following QR code for detailed information.



Organization Events are the place where organizations show their usual activities. Various activities such as concerts, trial sessions, and exhibitions will be held in accordance to the feature of the organization. Take a try!



## Student Union Central Part Welcome Party Booth

RU Student Union Central Part Active Members Needed!

Would you like to join us in the central part of Student Union?  
Those who are interested in Student Councils  
and Central Administrative Office,  
please visit our booth!

Time and date: 11:30 a.m. ~ 5:00 p.m., April 3 and April 4  
Location: Near the headquarter of welcome festival



For Details of Recruitment ↑

Contact information  [info@r-circle.net](mailto:info@r-circle.net)



For Zoom Information Session ↑

# Stage Event ***STUNNER***


Please enjoy the stage performance  
that give all students the  
impact of *STUNNER*!

**April 3~4**  
**12:00 p.m. ~ 1:20 p.m.**  
**@West Square**

## **April 3rd**

dig up treasure  
Maistyle  
mauloa  
Steppin'

## **April 4th**

A cappella circle Clef  
Modern Jazz Ballet  
 Ballroom Dance Club  
Kyototeam 「sarara」

 **No Photos**

Please refrain from eating or drinking in the venue.

Please also follow the instructions of welcome event operation staffs.

# Stamp Rally Event

[Lottery Goods]

## [Time and Date]

11:15 a.m. ~ 5:30 p.m., April 3rd

10:30 a.m. ~ 5:30 p.m., April 4th

## [Exchange Location]

The square in front of Shitokukan

## [How to Attend]

Tour through **5 checkpoints** on campus

Collect the stamps !!

You can attend the lottery after collecting all the stamps !

There is also present for attendance!

※ Please check the rally event card for details

• Pair passport for Tokyo Disney Resort

• SONY wireless headphone

• Matsusaka beef hamburger

• 3000 yen Amazon gift card

• Anker mobile battery

• LuLuLun Hydra EX Mask (28 pcs)

• 2000 yen Starbucks gift card

etc.



# ATTENTION



- ① Please use the designated smoking area when smoking.
- ② Forceful solicitation is against the law.  
Please be extra careful.
- ③ Drinking liquor is prohibited in all campuses.
- ④ Please be careful of anti-social political and religious organizations, as well as multilevel marketing.

## Issued by

Welcome Festival Headquarter

Central Square

TEL 075-465-7891

From University-wide Events Department,  
Central Administrative Office